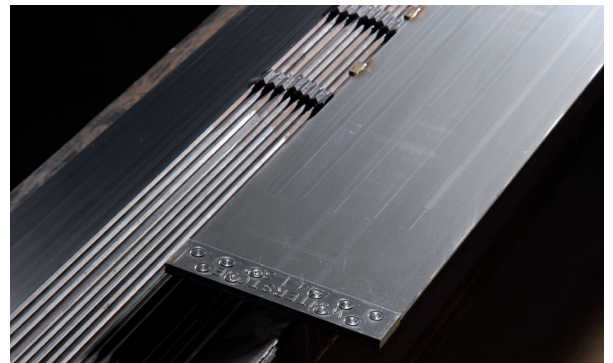




Winterstone framesaws provide an important factor when it comes to transforming blocks into slabs or squaring irregular blocks.

Materials

- Marble
- Limestone
- Travertine
- Sandstone
- Slate
- Emperador
- Others



Benefits

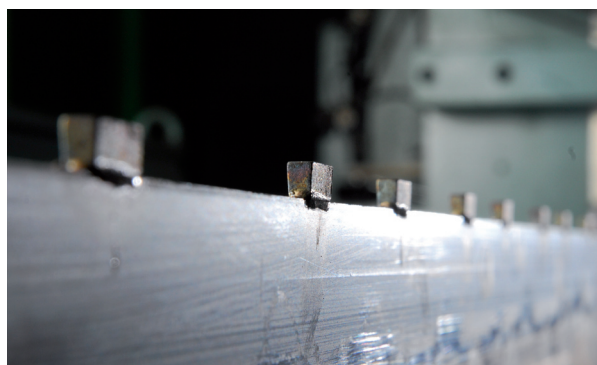
1. Higher speed for better productivity
2. Longer life for customers cost-effectiveness
3. The best compromise speed/lifetime for your requirements and always with the best quality to cut, which will save you from polishing expenses



Steel Thickness

Available thickness

2,0 mm	2,5 mm	3,0 mm	3,25 mm	3,50 mm
--------	--------	--------	---------	---------



Raw material quality selection

All raw materials we use for the manufacturing of our products are carefully selected to ensure the best quality of the tools delivered.

Winterstone particularly guarantees the best premium steel quality to support our segments performance.